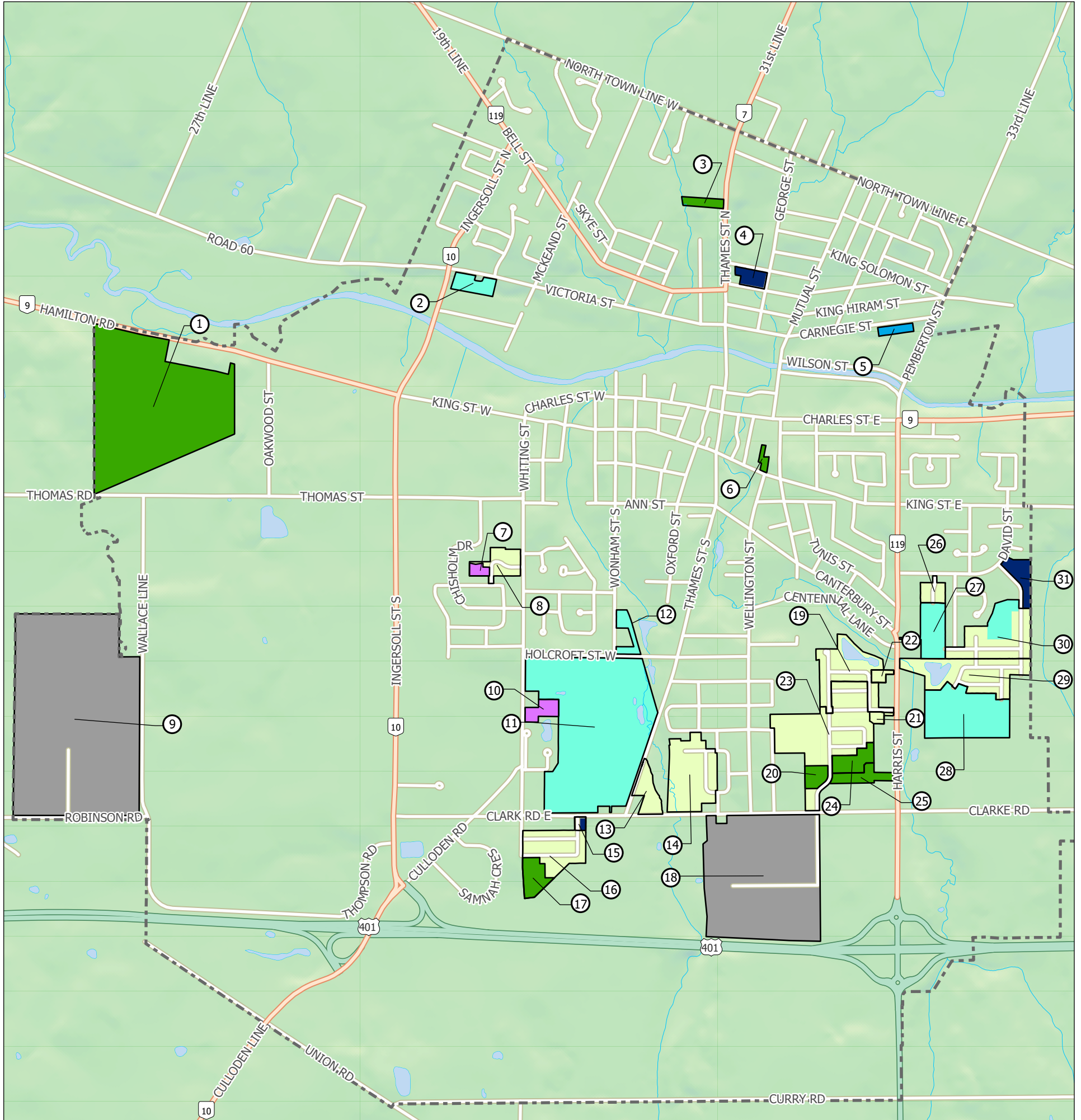


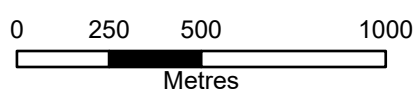
# Development Activity - Town of Ingersoll



- Residential Development**
- Circulated or Submitted Plan
  - Draft Approved Plan
  - Condominium Plan
  - Approved Site Plan
  - Built Out Plan
- Industrial Development**
- Registered Plan Industrial
  - Draft Approved Plan Industrial

Map #	File Number	Name	Total Units
1	SB24-03-6	South Thames Developments Inc.	582
2	32T-91001	McHugh-Ingrox Ltd.	10
3	ZN6-21-11, SP6-23-04	Vaughan Dev. Corp.	40
4	SP6-14-04-1, OP22-08-6, ZN6-22-05	Royal King Management Corp.	20
5	SB12-01-6	County Contracting of Wheatley Inc.	
6	SP6-22-05	Boxwood Investments Inc.	24
7	SP6-20-01, CD20-03-6	Oak Country Homes Ltd.	10
8	SB12-03-6, SB13-01-6	ATSA Corp.	29
9	SB22-03-6	2862083 Ontario Inc.	
10	SP6-18-02, CD18-03-6	Pomponio	16
11	SB20-04-6	Ingersoll Greens Inc.	569
12	SB21-01-6	Erie Thames Powerlines Corp.	18
13	SP16-19-04	Plester	120
14	SB12-02-6	Schout Group Inc.	45
15	SP6-18-01	Reeves Land Corp.	92
16	SB17-02-6	Reeves Land Corp. (Golf Estates)	84

Map #	File Number	Name	Total Units
17	SP6-22-01, CD22-02-06	Reeves Land Corp.	38
18	32T-07007	Town of Ingersoll	
19	32T-06001	Sifton Properties Ltd.	54
20	SP6-19-01	Sifton Properties Ltd. (Block 65)	133
21	SP6-16-05	Sifton Properties Ltd. (Block 63)	11
22	SP6-16-03	Sifton Properties Ltd. (Block 62)	133
23	SB14-02-6	Sifton Properties Ltd.	138
24	SB16-04-6	Sifton Properties Ltd. (Phase 5)	35
25	SB24-05-6	Sifton Properties Ltd. (Phase 6)	21
26	32T-08001	Cam-Don Properties	10
27	SB22-08-6	1879784 Ontario Inc.	73
28	SB21-17-6	1879784 Ontario Inc. (Klondike Homes)	179
29	32T-06007	1658110 Ontario Ltd.	82
30	32T-87004	Oak Country Homes Ltd.	84
31	SP6-18-03	187984 Ontario Inc.	64



LAST UPDATE: December, 2025

Note: These maps are not intended to show all development. Only larger residential and industrial subdivisions/site plan applications are depicted.